

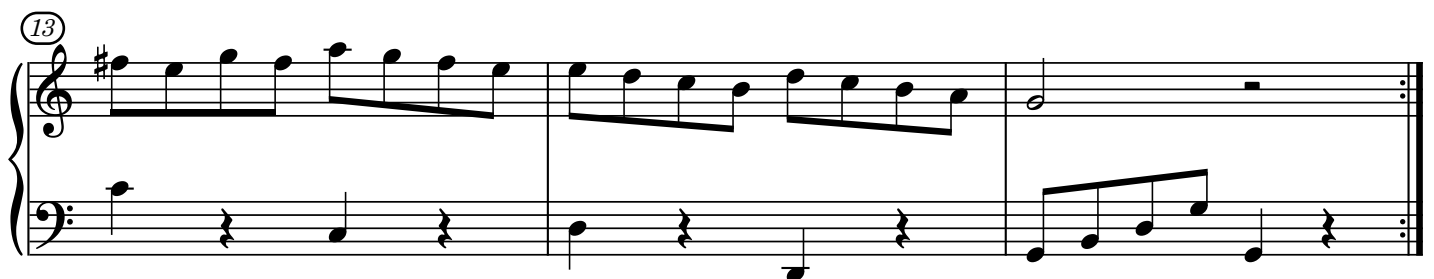
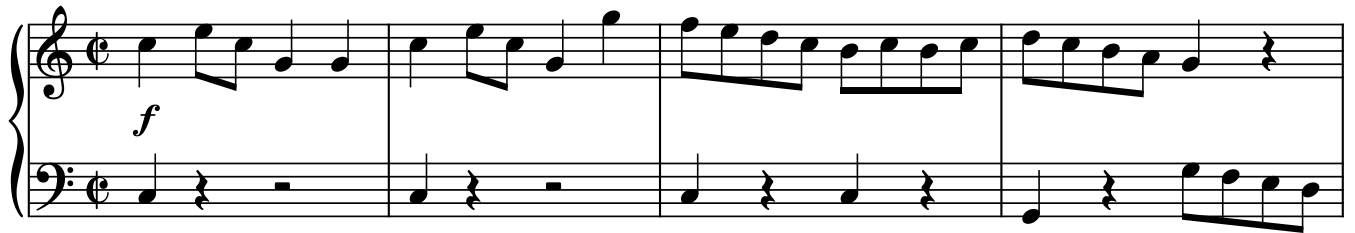
Sonatina n.1

Op.36



M.Clementi

Allegro ♩ = 160



(16)

p

b

(20)

f

b

(24)

p

(28)

cresc.

f

(32)

(36)

Andante ♩ = 62

Andante ♩ = 62

tr

3

[illegible]

13

3 *fz* *p*

fz *p*

3

(24)

f 3 3 *tr*

Vivace

p

(7)

f

(14)

p *f*

(21)

p *f*

(27)

dim. *p*

(34)

pp

This system contains measures 34 through 40. The right hand features a continuous sixteenth-note arpeggiated pattern. The left hand plays a steady eighth-note accompaniment. A piano (*pp*) dynamic marking is present in measure 35.

(41)

f

This system contains measures 41 through 47. The right hand continues with the sixteenth-note arpeggiated pattern. The left hand maintains the eighth-note accompaniment. A forte (*f*) dynamic marking is present in measure 42.

(48)

p *f*

This system contains measures 48 through 54. The right hand continues with the sixteenth-note arpeggiated pattern. The left hand maintains the eighth-note accompaniment. Dynamics of piano (*p*) and forte (*f*) are indicated in measures 50 and 53 respectively.

(55)

p

This system contains measures 55 through 60. The right hand continues with the sixteenth-note arpeggiated pattern. The left hand maintains the eighth-note accompaniment. A piano (*p*) dynamic marking is present in measure 57.

(61)

f

This system contains measures 61 through 64. The right hand continues with the sixteenth-note arpeggiated pattern. The left hand maintains the eighth-note accompaniment. A forte (*f*) dynamic marking is present in measure 61.

(65)

ff

This system contains measures 65 through 70. The right hand continues with the sixteenth-note arpeggiated pattern. The left hand maintains the eighth-note accompaniment. A fortissimo (*ff*) dynamic marking is present in measure 66. The system concludes with a double bar line.